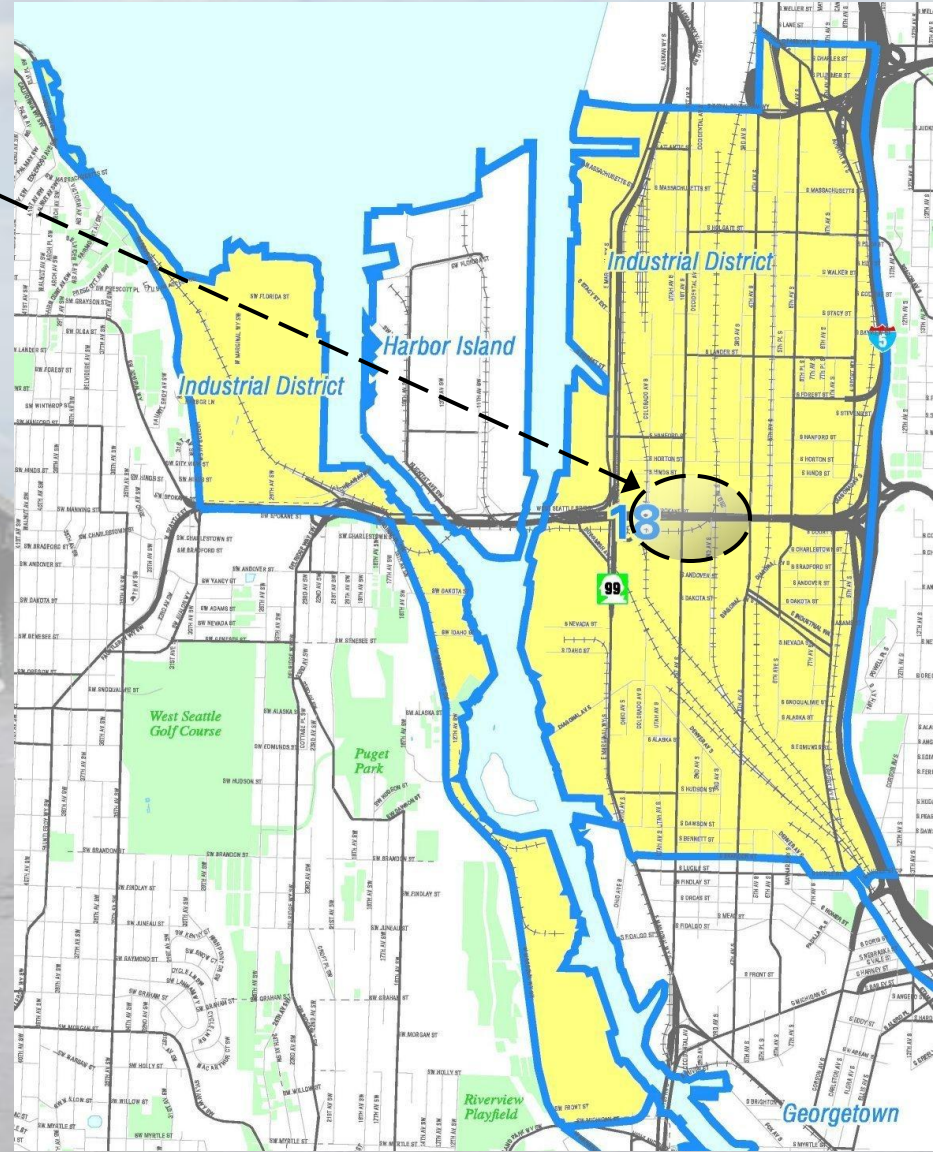


# Spokane Viaduct



**Project Site**



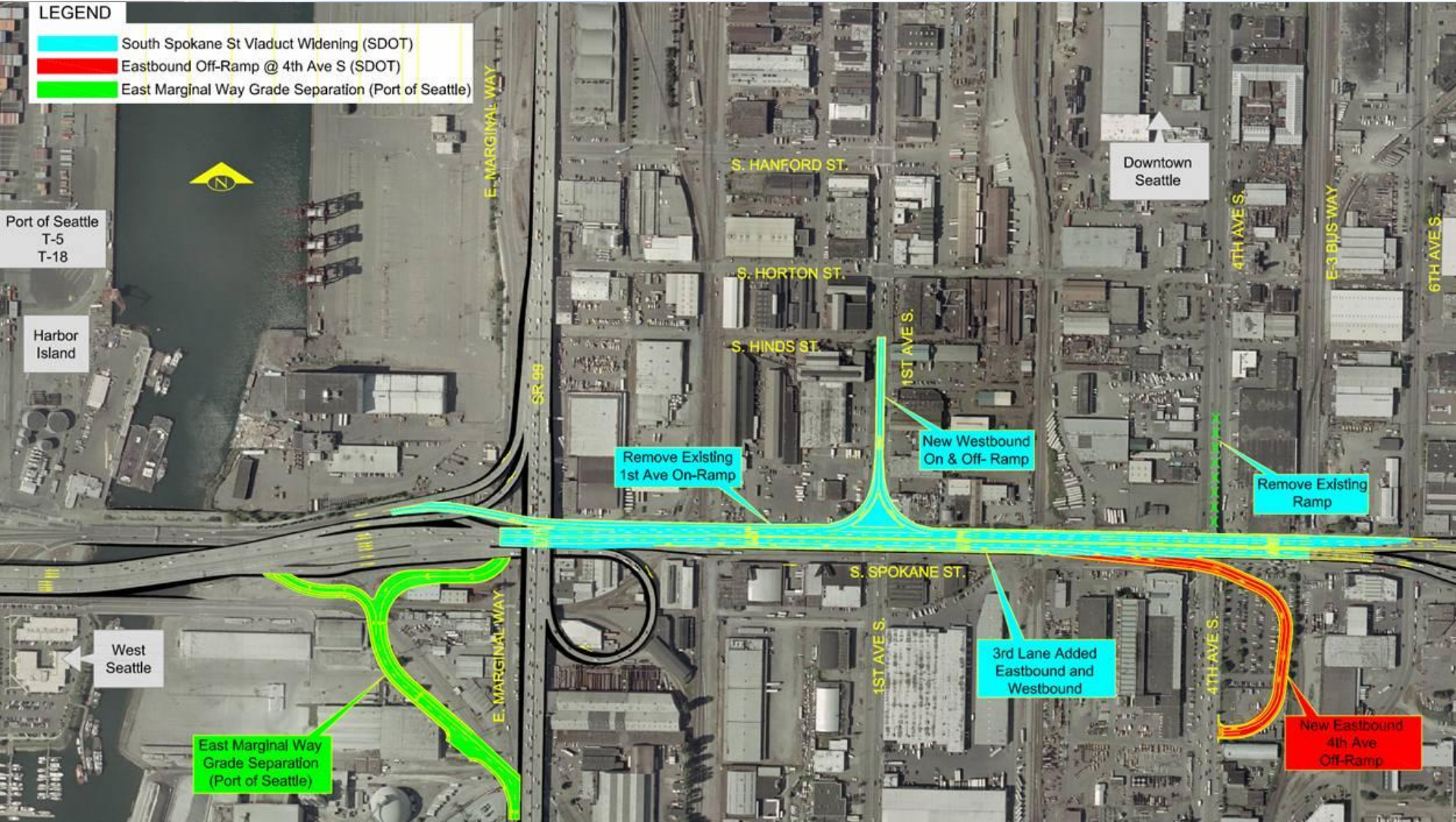
# *Spokane Viaduct*



## ***Project Goals***

- ❖ Improve safety and traffic flow for all travel modes
- ❖ Reduce conflicts between modes and enhance freight mobility
  - ❖ Reduce delays on Spokane lower roadway at railroad tracks
  - ❖ Provide new access to surface streets from upper roadway
- ❖ Facilitate transit access between West Seattle and downtown

# Spokane Viaduct



Project Overview Map

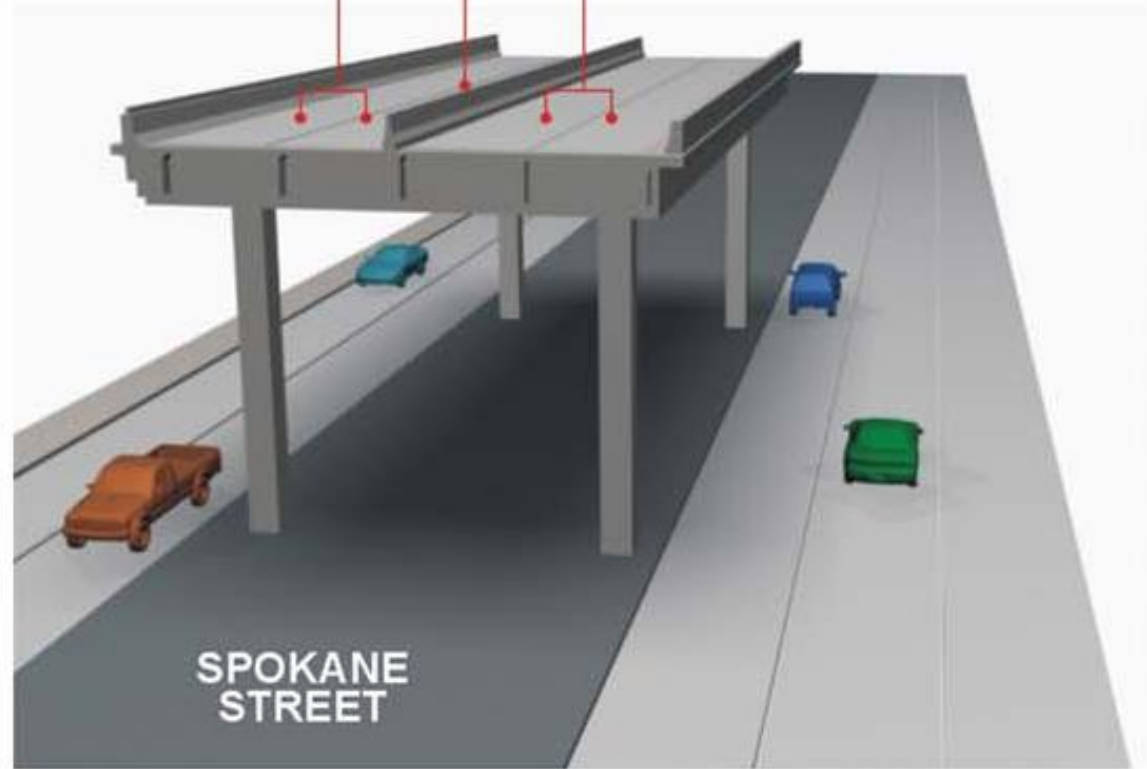
# Spokane Viaduct

**Existing Structure...**

**EASTBOUND**

**WESTBOUND**

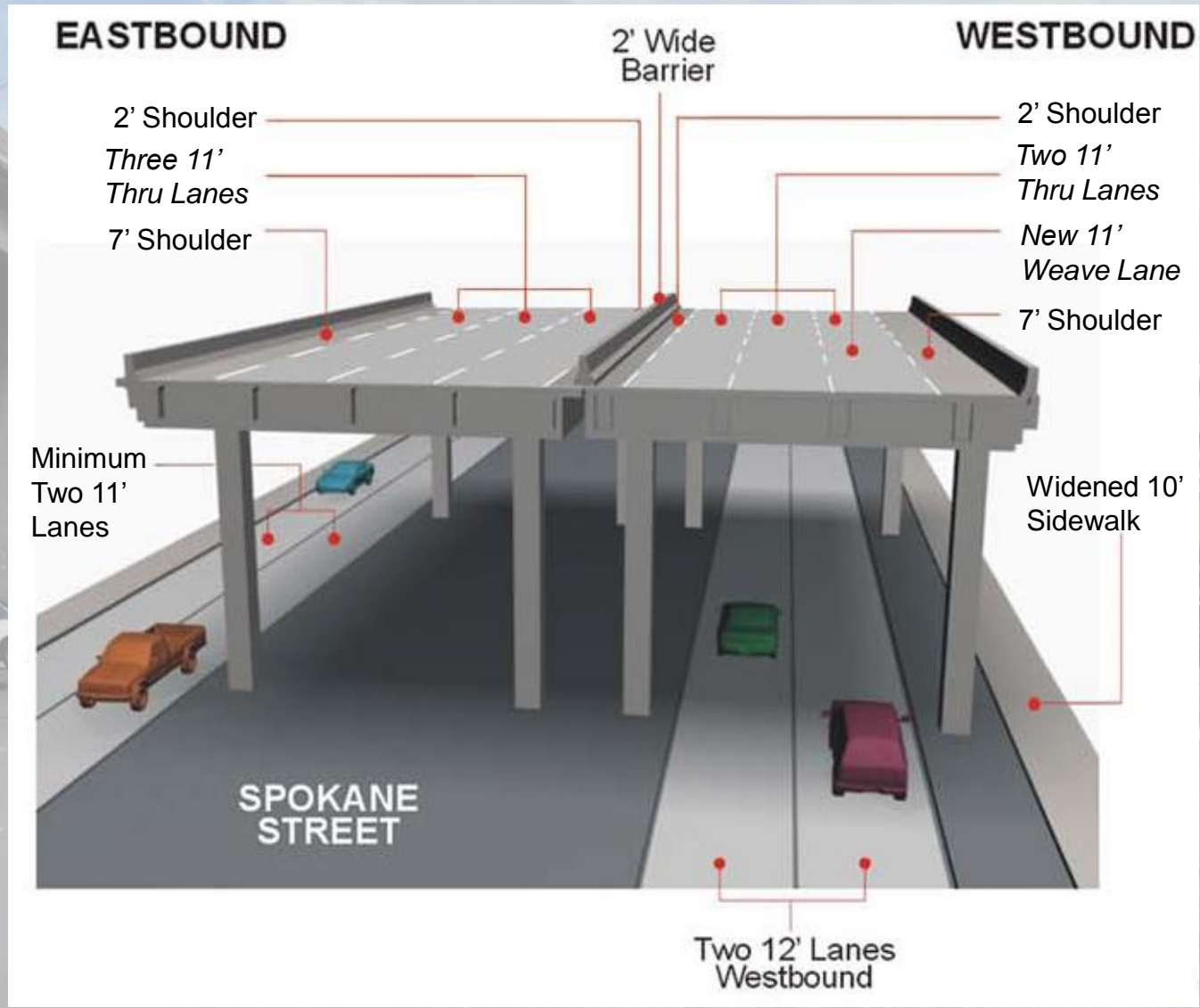
Two 10' Lanes      1' Wide Barrier      Two 10' Lanes



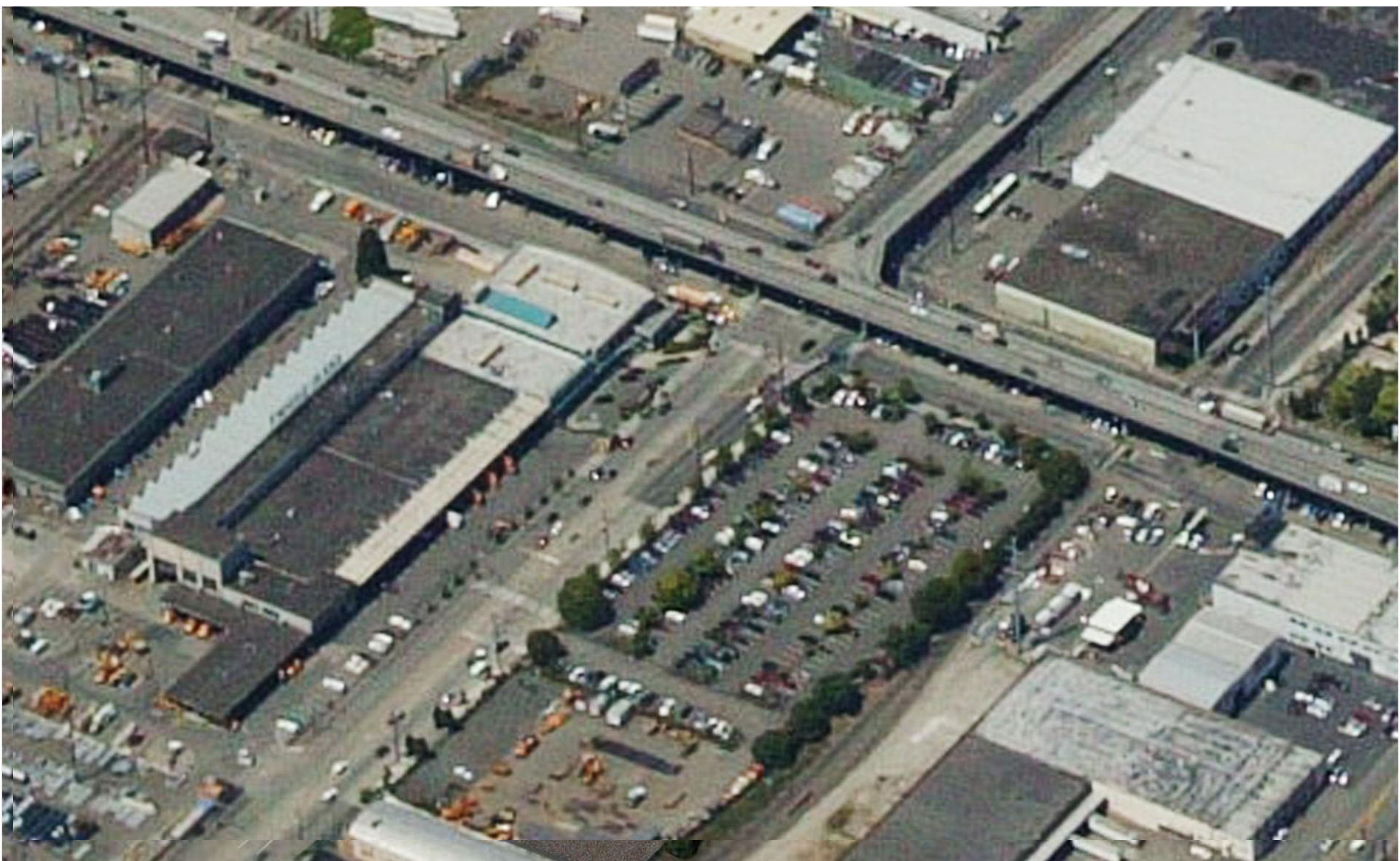
# Spokane Viaduct



**After  
Widening...**



# Spokane Viaduct

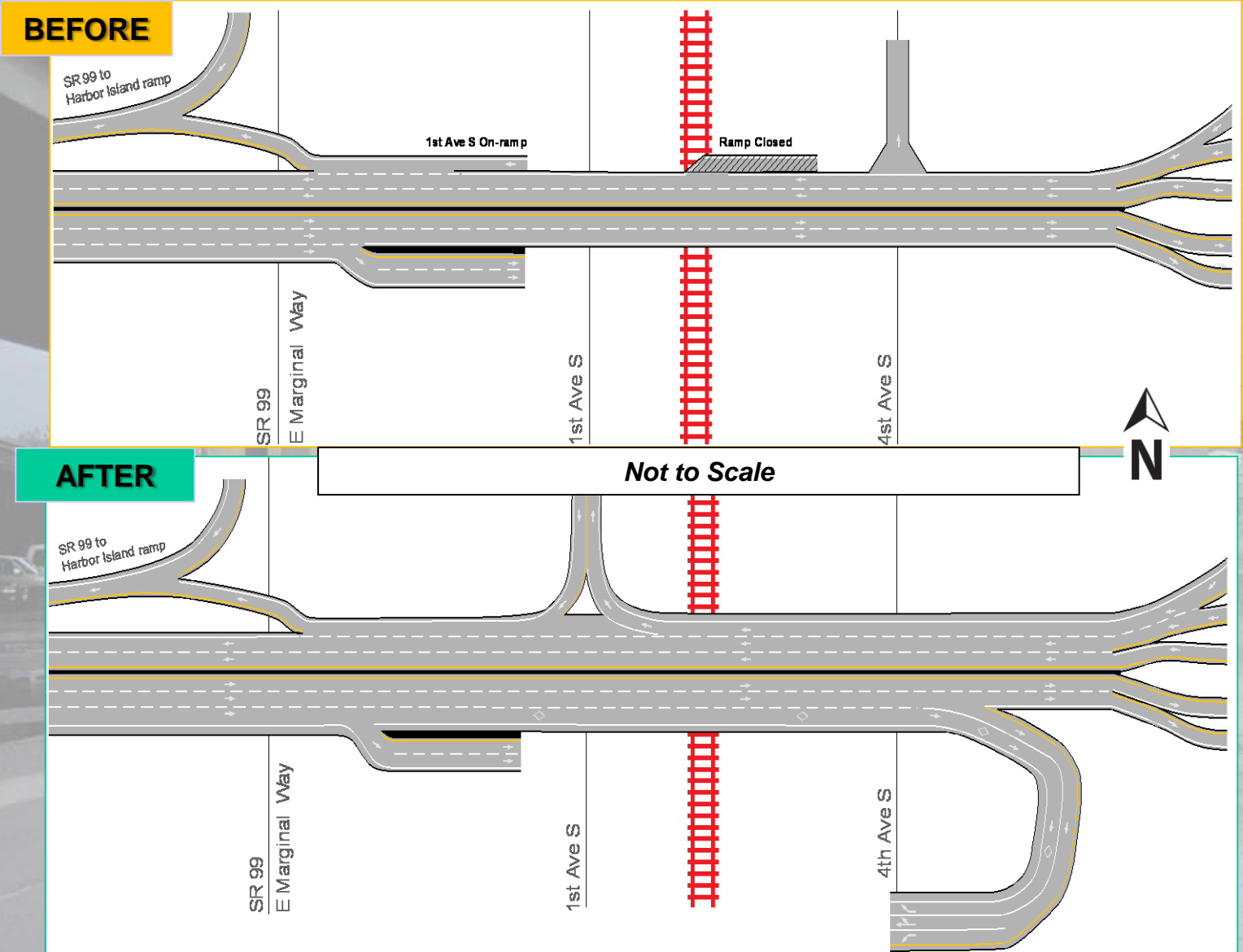


# Spokane Viaduct





# Spokane Viaduct



## Key Schedule Dates:

<b>Date*</b>	<b>Closure or milestone</b>
January 2010	Close and remove existing off-ramp from westbound South Spokane Street Viaduct to 4th Avenue South
January 2010	Close westbound South Spokane Street (lower roadway) between 6th Avenue South and 4th Avenue South, then to East Marginal Way by February 1
May 17, 2010	Close and remove existing on-ramp to westbound South Spokane Street Viaduct from 1st Avenue South
Summer 2010	Open eastbound South Spokane Street lower roadway
Fall 2010	Open new eastbound South Spokane Street Viaduct off-ramp to north- and southbound 4th Avenue South
Late 2011	Open new westbound Spokane Street Viaduct on- and off-ramps at 1st Avenue South
May 2012	Project complete

*\*all dates subject to change*